



CUT STONE
INDIANA BUFF
CUT STONE

GEOLOGY

limestone - quarried in USA

COLOR RANGE

light buff

CONSISTENCY BLOCK/SLAB

consistent

WEIGHT CALCULATED IN INCHES

l x w x h / 1728 (inches cubed) x 155
= approx 155 pounds per cubic foot

ASTM TESTING DATA

INDIANA C97

water absorption—4.84%

specific gravity—2.27 to 2.28

INDIANA C99

modulus of rupture

wet perpendicular—653 psi

wet parallel—727 psi

dry perpendicular—843 psi

dry parallel—784 psi

INDIANA C170

compressive strength

wet perpendicular—5,735 psi

wet parallel—4,693 psi

dry perpendicular—6,581 psi

dry parallel—5,845 psi

INDIANA C880

flexural strength

wet perpendicular—544 psi

wet parallel—556 psi

dry perpendicular—716 psi

dry parallel—706 psi

PANEL INSTALLATION SHOWN

Mortar: Western W-5 (white)

Joint Type: struck

Size - 11 5/8" x 23 5/8" sanded finish



ARCHITECT/DESIGNER INFO

BIM DETAILS - SCAN
Revit, Hatch Patterns,
Seamless Textures,
3-Part Specs, DWGS,
SDS, Warranty

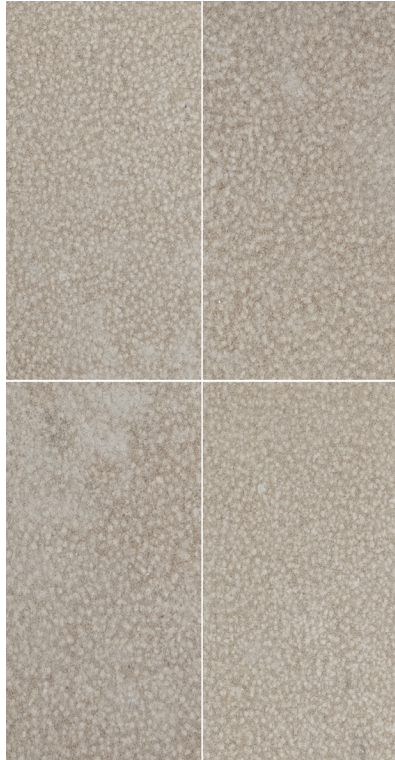


CUT STONE
INDIANA BUFF
CUTSTONE

BRUSHED



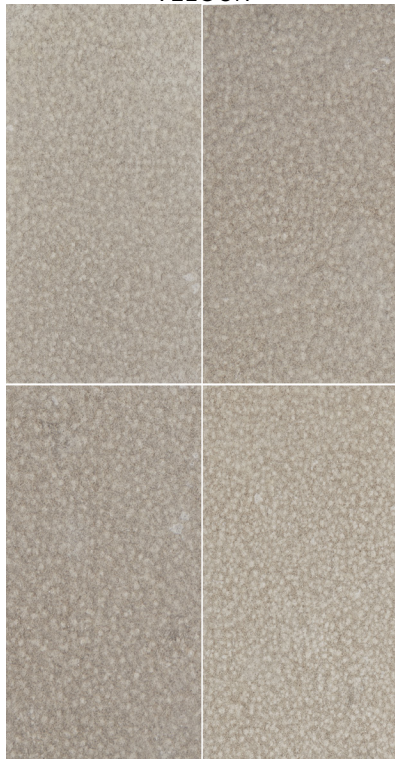
BUSHHAMMERED



SANDBLASTED



VELOUR



SANDED

