



CUT STONE
ST. MARY CREAM
CUT STONE

GEOLOGY

limestone - quarried in USA

COLOR RANGE

light gray and cream; light veining;
 occasional flecks of light buff,
 sometimes mottled

CONSISTENCY BLOCK/SLAB

somewhat consistent

WEIGHT CALCULATED IN INCHES

$l \times w \times h / 1728$ (inches cubed) $\times 155 =$
 approx 155 pounds per cubic foot

ASTM TESTING DATA

ST. MARY C97

water absorption—1.95%

specific gravity—2.43

ST. MARY C170

compressive strength—9,696.6 psi

ST. MARY C880

flexural strength—1,869 psi

PANEL INSTALLATION SHOWN

Mortar: Laticrete MVIS

Joint Type: drystack

Size: h: 6" x random length - sanded finish



NATURAL CLEFT



www.buechelstone.com

ARCHITECT/DESIGNER INFO

BIM DETAILS - SCAN
Revit, Hatch Patterns,
Seamless Textures,
3-Part Specs, DWGS,
SDS, Warranty



CUT STONE
ST. MARY CREAM
CUT STONE

BRUSHED



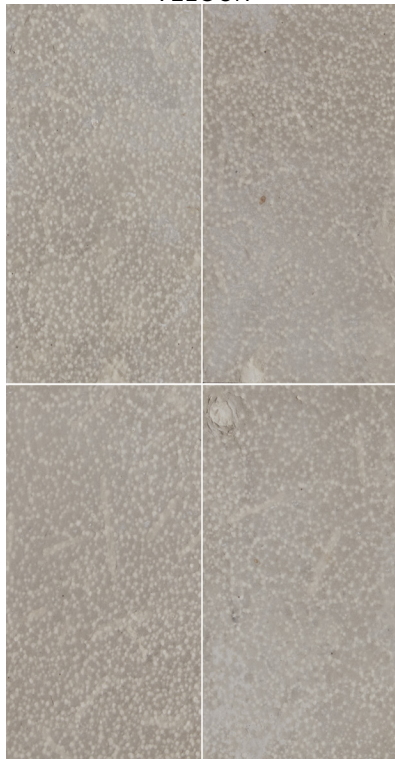
BUSHHAMMERED



SANDBLASTED



VELOUR



SANDED

